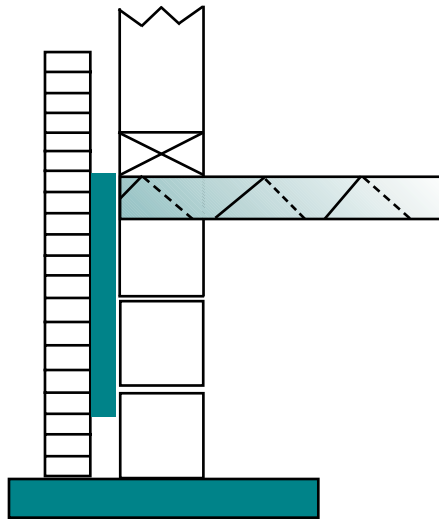


## **Appendix E Alternative methods of slab insulation**

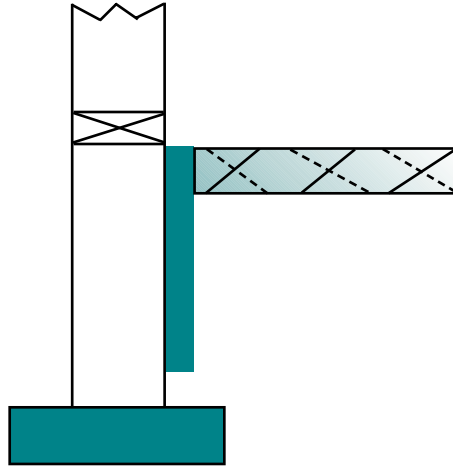
Note that many construction details have been omitted in these simplified drawings. These slab insulation techniques demonstrate acceptable practice.



*Insulation can be placed on the exterior of homes that are finished with brick veneer. Note that the top of the insulation is at the top of the slab.*

*This same technique can be used on a monolithic slab. Because the insulation is more vulnerable to termites in this application, termite resistant foam should be used.*

Appx. E: Alternative methods of slab insulation



*This technique is similar to the “L” block option but requires less work. As with the “L” block, the exposed foam is covered with the edge of the drywall and baseboard molding.*